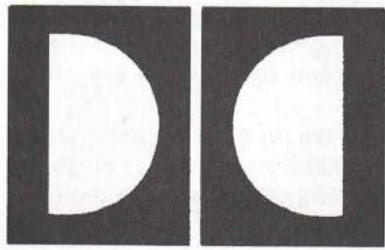


DOLBY DIGITAL



YAMAHA

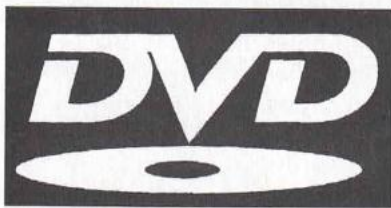
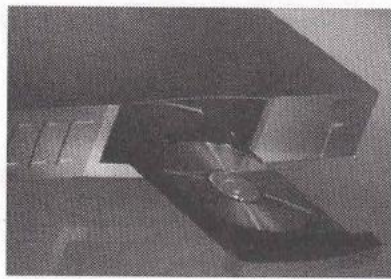
*What is
Why Do I Need
How Do I Get* **It?**

SPECIAL **FREE** SEMINAR

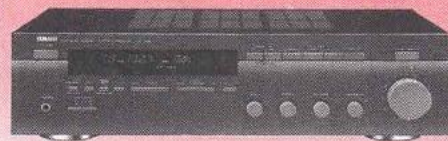
Thursday, October 23, 1997 at 6:00 PM

Interested in learning all about the digital home theater revolution? There's a lot of confusion among the hoopla, so now is an excellent time to really answer your questions. What is Dolby Digital? What about DVD? How do they work and what do they do? What is the future of these formats? Factory representatives from Yamaha will be at The Stereo Shop to demonstrate and explain this exciting new home theater format! Also, seating at the seminar will be limited, so please call Bob **NOW** at **523-7250** for reservations.

Come early and enjoy refreshments!

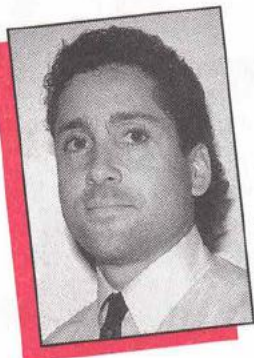


Component Service Special Protect Your Investment



Only \$32.50 (regularly \$65.00)! Dirty controls and switches can impair your receiver's or preamplifier's performance and reliability. Don't let dirty equipment spoil your listening pleasure and cause premature component failure. Bring your receiver or pre-amp in during the month of October, our technicians will professionally clean the circuit controls, switches and check its overall operation. You'll protect your investment and hear better sound. *Offer ends 11/1/97.*

See Page 4 + 5



*Nicholas
Perfito*

Exquisite sound, world renowned, handcrafted: THIEL Speakers.

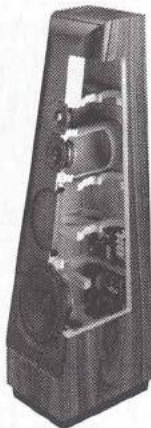
If you are looking for fantastic home theater and music speakers that look as good as they sound, you must come and hear (and see!) the new THIEL line at The Stereo Shop. Knowledgeable audiophiles have long been aware of THIEL's stellar reputation. Professional audio critics in America, Europe and Japan consistently rank THIEL at the highest level for both sonic performance and home decor.

THIEL

Ultimate Performance Loudspeakers

Very few speaker manufacturers approach THIEL, much less match them, for the beauty and design of their cabinets. To complement a variety of decorating tastes, they offer a large number of cabinet finishes and grille fabric colors. Standard finishes are Walnut, Black Ash, White Oak and Natural Cherry. Also available are such finishes as Birds Eye Maple, Amberwood and many others. THIEL can also customize cabinets for you - painting, staining and even matching a piece of your furniture - to your specifications!

But above all, THIEL loudspeakers are pre-



cision instruments. Every musical sound is composed of several pitches uniquely related in volume, timing, and synchrony (amplitude, time, and phase). THIEL calls their speakers "coherent source" because they are amplitude, time and phase coherent, preserving all three types of sonic information.



Come and audition THIEL Coherent Source loudspeakers at The Stereo Shop. These speakers are a must-see as well as a must-hear! We look forward to introducing you to such performance.



MCINTOSH...STILL THE BEST

The Stereo Shop is very proud of our longstanding relationship with McIntosh Laboratory. Since 1949, McIntosh offers the ultimate in quality and longevity, builds the finest home entertainment equipment, and still leads the pack in today's world of consumer electronics.

Take for example their latest breakthrough product, the C-100 preamplifier, one of the finest in the world. This component features the most advanced digital circuitry such as optical controls that are not only 100% accurate, but will never wear out! Listening to this incredible musical instrument will put you

right in the middle of the recording studio or concert hall!

The brand-new MAC-3 is the finest Dolby Digital (AC-3) home theater surround decoder available (see what Dolby Digital is, page 4). You won't believe the large, airy and spacious sound the MAC-3 will bring to your entertainment center! The MAC-3 can be updated to any new digital surround sound formats! You can even use the MAC-3 as a stand-alone preamp for a premiere video system!

If you have an older McIntosh C-39 or MX-130 home theater control center, and don't have the digital ready inputs necessary for the MAC-3, McIntosh is currently offering to custom-modify it for you with digital ready inputs for only \$695.00, including a new faceplate! What a great idea from the company that puts its customers first! This is a limited time offer so you must hurry!



McIntosh's MC-300, a 300 watt per channel powerhouse, is one of the best amplifiers in the world. It features McIntosh POWERGUARD, a circuit that prevents the amp from being overdriven (clipping), which is easy to do with digital sources like CD and DVD. This is so important, I can't stress enough that every amplifier should be built like this! McIntosh research and design brings you the latest-technology amplifiers with best possible performance, total reliability, and unsurpassed longevity!

As always, I can proudly say, "McIntosh...still the best!"

Nicholas Perfito

Nicholas J. Perfito

**90 days same as cash on all purchases. Five-year maintenance contracts to protect your investment!*

SYSTEM ONE



Yamaha RX-V490 A/V Receiver - One of the simplest and easiest to use products in all of home theater. Featuring Dolby Pro Logic and 250 watts of power into five channels, and features to make your home theater come alive! Its digital technology puts the sound of a movie theater in your own home. Hi-Fi music modes make listening to your favorite music a whole new experience. Remote control allows you ease and convenience of use.



Yamaha NS-A636 bookshelf speakers - The NS-A636 takes up less space but delivers big sound from its 8" woofer and dome tweeter. This 3-way speaker packs dynamics, imaging and controlled bass response into small, solid cabinets that fit anywhere. Plus magnetic shielding allows convenient placement next to your television.



Boston Acoustics CR-2 center channel speaker - 2-way design for excellent localization of on-screen effects and clear intelligible dialog. The compact sizing and magnetic shielding allow for convenient placement atop your television.



Yamaha NS-E60 surround speakers - The perfect surround/effects speaker for people who want their speakers to be heard and not seen. Full range 4" bass reflex design helps create all the depth and excitement you'd find in an actual cinema.

Save!!! - System Price \$748.00 - For a Limited Time Only!

Yamaha YST-SW150 Subwoofer - Add thunder to this Home Theater system with Yamaha's powered dual 8" woofer design. Features a 120 watt amplifier, auto on/off and magnetic shielding for flexible placement. **Only \$ 379.00**

SYSTEM TWO - GREAT VALUE IN A MINI SYSTEM



Yamaha AV-1 Cinema Station - Before high performance Home Theater can fit in your life it has to fit in your home. Here it is...Home Theater in a simple, easy and compact package. Connect your VCR to the AV-1 and hear powerful sound through its compact cube speakers and powered YST subwoofer. With 200 watts of power into five channels, Dolby Pro Logic and Cinema DSP Technology, movie sound comes alive in your living room. When you're in the mood for music, the AV-1 has a high performance CD player, and a built-in tuner with 40 presets for rich sound that's convenient too. The Yamaha AV-1, a sophisticated yet simple A/V system for a complicated world.

Save!!! - System Price \$1199.00

SYSTEM THREE



Yamaha CL-1 Classic Line Home Theater System - Designed to allow a full appreciation of audio and video sources. With beautiful exteriors and exquisite sound quality, they are inspired by a sense of fine quality. This system may be compact but you'll have more than enough power for five-speaker surround sound. The compact RX-V10 receiver offers a wealth of advanced features: Dolby Pro Logic, 5 channels of clean power, high-performance tuner for outstanding reception and 40 station preset tuning, plus Yamaha's unique Cinema DSP mode, which delivers tremendous impact with Dolby-encoded movie soundtracks. To add realistic presence to music sources, there are four HiFi DSP modes. Frequency response is excellent, with each and every sound clean and clear. The CDX-10 compact disc player and KX-W10 double cassette deck complete the system for total music enjoyment and flexibility. Compact and beautiful components that bring elegant audio/video performance and design into your home. **\$1195.00**



Boston Acoustics Micro 90t Theater Speaker System - Boston's latest line of home theater speakers provide incredible, seamless sound that is practically invisible. The Micro 90t effortlessly fills a large room with rich, ample sound. Small and stylish satellites are easy to place on walls or shelves, the powered subwoofer delivers 75 watts of firm, deep bass in a compact enclosure, a matching center channel reproduces clean, articulate dialog and on-screen effects. A unique system approach yields a balance between form and function, the perfect answer for those who want sound that is heard but not seen. **\$1000.00**



Boston Acoustics VRS Micro Surrounds - Add the VRS Micro to the Micro 90t system and fill your room with three-dimensional ambient sound, just what you need for a thrilling, life-like home theater experience. Small and inconspicuous, includes brackets for easy wall or ceiling mount. **\$199.00**

Save! - System Price \$2250.00



*Bob
Dacundo*

THE ERA OF DOLBY DIGITAL IS HERE

Dolby Digital (AC-3) is the newest surround sound advancement in home theater technology. It's much clearer than Dolby Pro Logic and gives you a far more expanded sense of depth, localization and overall realism! The center channel is clear and intelligible. You won't miss a word! The two rear channels are stereo, so you get true wrap-around movement. And the subwoofer channel is an actual sixth channel that only handles the bass frequencies for cleaner, smoother, earthshaking bass! Dolby Digital gives movie viewers the most realistic sound sensation yet.

Yamaha Dolby Digital - the Technology

Is a Dolby Digital receiver a good way to enjoy this new technology? It is if it's a Yamaha! One very good reason is because Yamaha builds its own microprocessors, or Large Scale Integrated circuits (LSI), a term applied to integrated circuits that contain from 500 to 20,000 switches. While many companies offer general purpose LSI's to audio firms, Yamaha makes its own to perform specific functions called for

YAMAHA

in Yamaha designs (ASIC- application specific integrated circuits). Since the Yamaha ASIC LSI's are only designed for a single purpose, they operate with greater efficiency.

Hear the difference with Yamaha Dolby Digital!

The RX-V2092 - Yamaha's Ultimate Home Theater Control Center

If you decide to assemble a high-end Dolby Digital home theater system, Yamaha's finest receiver, the RX-V2092, is the place to start. For even greater movie realism, Yamaha has developed a means of compensating for differences between public theaters and a home media room. The result is a new form of DSP (Digital Signal Processing) called "Tri-Field CINE-MA DSP" which reproduces actual movie theater and concert hall sound fields at home. Combining this with Dolby Digital, the RX-V2092 delivers previously unimagined levels of sound presence and realism. Plus it provides extra benefits like two-room capability and



extensive input flexibility. You can watch "Goldeneye" in Room 1 while playing back Mozart in Room 2. You get a clear, simple remote control featuring on-screen displays that make it easy to set up and operate your home theater. You also get a second remote for music playback in Room 2. The Yamaha RX-V2092 has a total of 570 watts, more than enough power to handle the most demanding movie soundtracks!

Other Yamaha Home Theater Receivers

If you don't need as much power, Yamaha's other Dolby Digital receiver, the RX-V992, provides most of the features of its big brother. It includes 400 watts of power and the same Tri-Field CINE-MA DSP movie theater and concert hall sound fields, including Dolby

Digital sound, two-room remote capability and remote controls as the RX-V2092.

Yamaha also offers high quality, affordable home theater receivers that can be updated to Dolby Digital later with a separate processor. All have inputs for a Dolby Digital processor and have high quality Dolby Pro Logic and six other CINE-MA DSP sound fields, as well as subwoofer output. The differences

CINEMA DSP
Tri-Field

lie mostly in power output and input capability. The RX-592 has 295 watts total, four audio and four video inputs, and a front panel A/V input for camcorder, video games, etc. The RX-492 has 250 watts, four audio and three video inputs, and universal remote control. The entry-level RX-392 provides 170 watts of power, four audio and two video inputs.

“Whatever Yamaha

home theater receiv-

er you choose, you

can be sure that it is

the very best avail-

able in its class!”

Definitive Technology Speakers

A perfect match for the Yamaha home theater receivers, and indeed any home theater system, are the Definitive Technology speakers. Their line of slender, floor-standing tower speakers can be easily and attractively placed in your home environment, yet provide a huge, natural soundstage of spectacular three-dimensional depth and breadth. They accomplish this with two sets of drivers - one facing for-

Definitive Technology®

ward and the other facing to the rear. This creates a wonderful panorama of lifelike sound for every listener in your room, wherever they sit or stand. Most importantly, however, this bipolar design makes the walls of your room seem to disappear and, in effect, expand the size of your room into the soundspace of the musical event your system is reproducing. They literally bring your music and movies to life!

Small Room? Great Definitive Home Theater Solution

I just discovered a great home theater speaker setup for smaller rooms! Definitive makes full-range center speakers that sound



absolutely amazing! In designing a surround sound system for a tighter area, I used three matched Definitive center channel speakers across the front. They have truly incredible dynamic range, high-definition clarity, extended linear response, three-dimensional pinpoint imaging and overall perfor-

mance which is truly state-of-the-art for music and home theater reproduction! Just add the Definitive surround speakers and you have a fabulous, space saving system!

A Strong Foundation

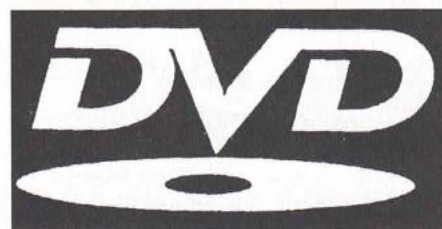
As home theater enthusiasts know, nothing equals the floor shaking power and startling impact of a great subwoofer. The Stereo Shop is pleased to present the Definitive Technology PF-18, with phenomenal low frequency extension and wide dynamic range. It is ultra fast, very powerful and can literally shake even concrete floors! Just what you need to stand up to T. Rex and The Terminator! Plus the PF-18 offers a refined musicality



which makes it an ideal choice for state-of-the-art music systems. And at its remarkable price, it's simply a steal.

DVD - The New Source of Digital Home Theater

DVD - Digital Versatile Disc - is the ultimate way to watch movies at home. Its resolution is three times clearer than VHS, plus it plays Dolby Digital sound! DVD's are as easy to use as CD's, and you don't need to rewind! You can buy great movies right now at many local stores, and your movies will never wear out! There are currently over 200 titles and growing fast. Plus, all DVD players can play compact discs (CD) as well, combining home theater and music sources in one component. DVD also offers the viewer the ability to choose different aspect ratios (pan and scan or



"letterbox") for viewing. The Stereo Shop carries excellent DVD players by Mitsubishi and Yamaha. The Mitsubishi players are on special, starting at \$579.00.



Mitsubishi Hi Fi VCR

Take advantage of an amazingly low price (\$299.00!) on a brand-new Mitsubishi 530 hi fi VCR and get the best VHS picture and sound! Why spend money fixing your old VCR when you can get a great hi-fi VCR at this price!

HDTV?

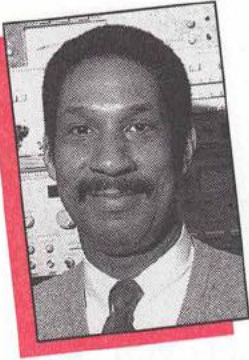
What About High Definition? Should You Wait or Buy a TV Today?

Buy a TV now! Despite all the confusion over high definition TV, nobody really knows what will happen. We do know that for years to come, it will be available only in



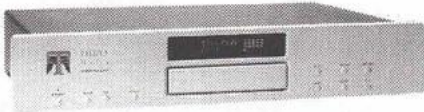
big-city markets. We also know that the new high definition TVs will cost \$2,000 to \$4,000 more than the sets they will replace. In the meantime, big screen TV's are rapidly coming down in price and look better than ever! Because today's TV format will continue to be broadcast, you can use your TV for the foreseeable future. Life, like high definition TV, is uncertain. So, instead of waiting years to see what will happen, just get a great TV now and spend those years enjoying it!

Bob Dacundo
Bob Dacundo



*Richard
Cox*

Autumn is always a great time to buy a great sound system at The Stereo Shop. I've spent the summer checking out the latest technology and equipment, setting up systems, and am ready to help you make the right decisions! My job is easy now, the questions never change.... Can this be fixed? Should I upgrade now? Will I hear a difference? What's the best? Call me any time for some answers to those eternal audio questions. Read on for some great offerings we have in store for your audition!



New Theta Miles CD player

This is the absolute best CD player available for under \$2,200.00! Theta Digital, the company that pioneered separate component digital to analog converters and transports, now offers its first compact disc player in one unit. A one-box player, the Miles features a rock solid ultra-stable CD transport coupled with Theta's proprietary high-powered computer chip DAC (digital to analog converter). It also includes four separate power supplies, and incorporates Theta's jitter reduction technology. It's the perfect playback device for the audiophile who wants a streamlined system. Phase and time accuracy are key to recreating an involving, convincing, "alive" sound character. In sum, the Miles is truly a magical CD player, and will bring new life to your recordings. It even has a unique analog volume

control, and can be plugged directly into a power amplifier to make an elegantly simple system.



Rega Planet CD transport/player

Here is a great new CD player for less than \$800 that comes from the renowned English turntable maker, Rega. This is a solidly built machine that top loads like a real "record player," which of course is Rega's specialty. The Rega Planet hearkens to the analog realm with a smooth, seductive sound all in one really neat package. Get the Planet, for sound that's out of this world.

Conrad-Johnson - It Just Sounds Right

Conrad-Johnson exemplifies the "high-end" here at The Stereo Shop. Want to instantly improve your audio system? Their fabulous tube preamps, like the Premiere 14, PV-12 and popular PV-10, instantly make your system more musical, warm and alive. We also have all their tube power amps, the monobloc Premiere 12 (140 watts each), the stereo Premiere 11 (70



watts per channel), and the stereo MV-55 (45 watts per channel). Conrad-Johnson also makes great solid state equipment too!

B&W Matrix Series

This British speaker maker offers advanced technology and wonderful performance with their Matrix 803 and Matrix 804 tower speakers,

reproducing sound as it was meant to be heard - live. Rich, lustrous, furniture grade finishes and elegant design complement fine decor. While taking up little floor space, the cabinet is actually the Matrix enclosure - a lattice of internal honeycombs that thoroughly brace the cabinet, causing coloration to disappear. B&W drivers are triumphs of engineering, handling high power and volume levels with ease. The Matrix 803 features an aluminum tweeter, Kevlar bass/midrange driver and two Cobex bass drivers. The Matrix 804 is slightly smaller but similar, with one less bass driver.



Featured: Affordable High End System

One of the best all-around music systems I have put together includes Rega, Conrad-Johnson and B&W and is now ready for your audition here at The Stereo Shop on our "high end" second floor. It isn't the most expensive system in the world, but it does a superlative job with music. Featured are the Rega Planet CD player (discussed above), and Conrad-Johnson separates, in this case the PV-12 tube preamplifier and MF-2300 solid state power amplifier. The speakers are the excellent B&W Matrix 803's, a slim tower design with the sound characteristics of B&W recording studio monitors. This system will astonish you with its purity of sound. Bring your CD's and your ears, and be prepared to have some fun!

Richard Cox

'til next time, **Richard Cox**

STEREO SHOP AUTUMN SALE

Save up to 70% on selected pre-owned, demo and new components. Each component is completely reconditioned and comes with twice the normal guarantee - each is guaranteed for six months! These are truly great values, providing excellent performance for the price. Our service department certifies that each meets the original factory specifications.

Manufacturer	Model	New	Used	Sale	Manufacturer	Model	New	Used	Sale
INTEGRATED AMPLIFIERS					COMPACT DISC PLAYERS				
Denon	PMA-750 (80 watt-excellent condition)	450	349	299	Sony	CDP-C50 (5 disc changer)	349	249	179
McIntosh	MA-5100 (50 watt-solid state-compact/powerful)	449	549	449	Denon	DCD-820 (20 bit-single drawer)	400	249	179
McIntosh	MA-230 (30 watt—MAC collectors item)	349	695	595	NAD	502 (audiophile favorite-MASH d/a)	299	239	199
PREAMPLIFIERS					Sony	CDP-C5F (5 disc carousel changer)	450	325	225
Hafner	DH-110 (solid state-w/phono)	450	349	279	Onkyo	DX-C330 (6 disc carousel)	349	NEW	249
Tandberg	TCA-3002A (European audiophile preamp)	795	549	395	Pioneer	CLD-M401 (CD-LD combi player)	760	495	319
AM-FM TUNERS					Nakamichi	MB-3S (6 disc changer-w/factory warranty)	500	NEW	349
Denon	TU-720 (Digital)	269	195	149	McIntosh	MCD-7000 (McIntosh's digital debut)	1399	1095	795
Sumo	Charlie (FM Digital-super selectivity/sensitivity)	499	349	285	CASSETTE DECKS				
McIntosh	MR-65 (Monaural tube tuner-collectors piece)	225	449	295	JVC	KD-V11 (Dolby B)	149	125	99
Nakamichi	ST-7 (Schotz noise reduction)	849	495	395	Nakamichi	480 (Dolby B)	495	325	249
McIntosh	MR-65B (vacuum tube tuner)	329	695	649	Kyocera	D-811 (Dolby B,C,HX Pro)	750	349	295
McIntosh	MR-67 (All tube-classic MAC-mint condition)	299	749	695	REEL TAPE DECKS				
McIntosh	MR-71 (World's best sounding FM tuner-tube)	399	895	795	Tandberg	TD-20A (10" R-R-Nice machine!)	1595	1395	995
McIntosh	MR-7082 (Digital, MPX decoder-mint!)	1579	1295	1200	VIDEO MONITORS				
McIntosh	MR-78 (The MAC tuner-supreme selectivity)	1699	2195	1995	Jensen	AVS-3250 (20" monitor-430 line resolution)	890	295	100
PREAMP/TUNERS					LOUDSPEAKERS				
Adcom	GTP-350 (AM/FM-phono input)	400	DEMO	379	JBL	J (center channel)	150	95	75
Adcom	GTP-500 (AM/FM-remote control-phono input)	600	495	395	Polk	CS-200 (center channel speaker)	219	149	119
McIntosh	MX-113 (solid state-FM stereo)	399	695	795	Scott	S-11D (3 way-bookshelf)	300	249	199
Adcom	GTP-600 (AM/FM-remote-Dolby Pro Logic)	100	DEMO	979	Advent	Larger (2 way-bookshelf-wood cabinets)	279	249	225
POWER AMPS					Clarke	Precedent (3 way-floorstanding)	600	395	295
Hafner	DH-220 (115 watt-solid state)	500	425	349	Eminent Technology	LFT-8(Hybrid Ribbon design-Nice!)	1699	1295	995
Crown	D-150A (80 watt-factory refurbished)	749	549	379	HOME THEATER EQUIPMENT				
McIntosh	MC-250 (50 watt-MAC workhorse)	450	499	449	JBL	J (center channel)	150	95	75
McIntosh	MC-2505 (50 watt-w/meters-classic)	549	695	595	SSI	720 (surround processor)	600	249	99
McIntosh	MC-2200 (200 watt-MAC keystone)	1199	1295	1195	Yamaha	DSR-70 Pro (surround processor-Pro Logic)	249	195	119
RECEIVERS					Yamaha	DSP-E200 (Pro Logic-surround processor)	499	349	219
Hitachi	SR-2000 (budget AM/FM receiver)	200	125	99	Lexicon	CP-2 (surround processor)	995	495	295
Sansui	5000 (vintage receiver)	430	295	149	Pioneer	CLD-1070 (CD-LD player)	600	449	295
Proton	P-950 (50 watt-AM/FM)	495	295	229	Yamaha	DSP-E300 (5 ch. Amp-Pro Logic Processor)	799	549	319
Stereotech	1200 (McIntosh design-vintage)	599	395	249	Pioneer	CLD-3070 (CD-LD combi player)	760	495	319
McIntosh	MAC-1700 (Classic MAC quality-45 watt-tube)	599	595	495	Yamaha	RX-V490 (Home Theater receiver)	400	NEW	319
McIntosh	MAC-1900 (Vintage solid state-45 watt)	949	895	695	Fosgate	DSM-3606 (logic steering signal processor)	629	500	349
A/V RECEIVERS					Pioneer	VSX-9500 (125 watt-Dolby Pro Logic)	1050	750	389
Yamaha	RX-V490 (Home Theater receiver)	400	NEW	319	Pioneer	CLD-D502 (CD,LD, CDV player)	760	495	395
Yamaha	RX-V590 (Home Theater receiver)	550	NEW	439	Pioneer	CLD-3070 (combo laser disc/CD player)	1300	595	395
Pioneer	VSX-9500 (125 watt-Dolby Pro Logic)	1050	750	389	Fosgate	Model Two (Digital Surround Processor)	1119	749	395
TURNTABLES					Yamaha	DSP-1000 (5 channel-surround processor)	999	749	399
Dual	1218 (33,45,78 rpm)	185	169	149	Lexicon	CP-1(surround processor)	1595	799	399
Denon	DP-31L (semi-auto-direct drive)	225	195	179	Yamaha	RX-V590 (Home Theater receiver)	550	NEW	439
Dual	1246 (belt drive)	n/a	300	279	Yamaha	DDP-1 (Dolby Digital AC-3 processor)	599	DEMO	499
Pioneer	PL-220 (Full auto-belt drive)	169	195	179	MISCELLANEOUS				
PHONO ACCESSORIES					Kinergetics	KMP-2 (Magnetic tape deck processor)	110	35	25
Sota	Reflex Clamp (high mass record clamp)	NEW	95		Marcov	PP1-A (moving coil phono pre-preamp)	130	85	35
Nitty Gritty	Record Cleaning Machine (as/is)		200		Terk	Leapfrog (remote control extender)	69	NEW	49
Denon	D-103 (low output MC cartridge)	NEW	295		McIntosh	MQ102 (Equalizer)	150	100	75
Linn	Asaka (low output MC cartridge)	NEW	495		AVS	PB289G (Audio/video switcher)	495	295	75
Goldbug	McIntosh MCC-800 (MC cartridge)	NEW	495		Ortofon	MCA-10 (Head-amplifier-moving coil)	235	100	75
Goldbug	McIntosh MCC-1000 (MC cartridge)	NEW	995		McIntosh	MQ-104 (Equalizer)	400	249	125
Cello	Chorale (low output MC cartridge)	NEW	849		Salamander	Archetype 5.0 (audio rack-5 shelves-black)	249	NEW	179
					McIntosh	MQ-101 (Equalizer-3 band)	300	275	250
					McIntosh	MQ-107 (Equalizer)	700	350	250
					CWD	Magic Lowboy (blonde oak)	1295	DEMO	995

stereo shop
audio/video interiors
Knowledge • Quality • Experience

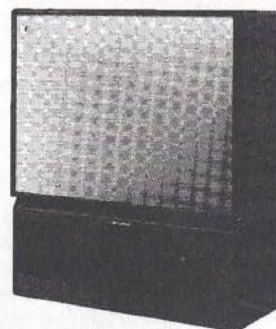
Diamond Line Televisions

High End Video from Mitsubishi

What makes these televisions better? This exclusive series of video products is designed for those discerning viewers who want the highest form of television technology. These TVs utilize a high density oxide coating in the CRT (tube) to produce a significant increase in brightness without affecting tube life. Plus the Diamond Line TVs combine contrast improving circuitry with digital comb filters to improve color and detail, exactly what you need to get the best performance from DVD and digital satellite broadcasts. A terrific picture is only as good as it is easy to access.

Mitsubishi has continually refined the operating menus and systems according to how people really use their televisions. The result is an intuitive graphic on-screen menu operating system that sets Mitsubishi far apart from the crowd. Programming your TV has never been so uncomplicated and user-friendly. Mitsubishi not only makes TV significantly bigger, they're making it significantly better.

MITSUBISHI
THE BIG SCREEN COMPANY™



VS-50801 - 50" TV Monitor - This rear projection design reaches new heights in performance, thanks to an all digital comb filter for better picture. Featuring advanced picture-in-picture, StarSight and 900 lines of resolution. Mitsubishi - It's much more than a large television - it a small theater!

Reg. \$3899.00 **Sale! \$3599.00**



CS-35607 35" TV - 35" television with two-tuner picture-in-picture. The picture-in-picture in this set is sizable and movable so you can choose where you want it. With 700 lines of resolution. Black tint tube, with a reduced curvature for a flatter picture with better contrast and richer colors.

Reg. \$2199.00 **Sale! \$1699.00**

stereo shop

audio/video interiors

Newsletter of The Stereo Shop, Inc.

505 Farmington Avenue, Hartford, CT 06105
(203) 523-7250

Store Hours:

Mon.-Wed.-Fri. 9-6
Thursday 9-8
Saturday 9-5

Closed Monday's in July & August

Bulk Rate
U.S. Postage
PAID
Hartford, CT
Permit No. 1355

Available Exclusively at the
stereo shop

McIntosh, Conrad-Johnson,
B&W, Theta, Eggleston,
Citation, Runco, Thiel,
Definitive Technology,
Tributaries, Canton

Also on display for your evaluation...

Yamaha, Adcom, NAD,
Boston Acoustics, Velodyne,
Rega, Mitsubishi,
Audioquest, Ortofon,
Kimber, Grado, Faroudja,
MIT, SpeakerCraft

Or Current Resident



Knowledge • Quality • Experience